



thelondongroup.com enquiries@thelondongroup.com

The London Group Open 2023

Copeland Gallery

10 – 26
November November

Open daily
10am – 5pm
Free Entry

Copeland Park
133 Rye Lane
London SE15 4ST

This catalogue is dedicated to
Anne Cloudsley (1915 - 2012)
and generously funded in her memory.
Elected to the Group in 2002

First published in Great Britain in 2023
by The London Group
www.thelondongroup.com
enquiries@thelondongroup.com

Texts © Amanda Loomes. Photos of artists' work: © courtesy of the artists. No part of this publication can be reproduced, stored in a retrieval system or transmitted in any form or by any means, electronic, mechanical, photocopying, recording or otherwise, without the permission of The London Group. Printed by ExWhyZed, Colchester, UK.

Contents

- 01 Introduction
- 02 London Group Artists
- 13 Tributes
- 14 Open Submission Artists
- 25 Membership 2023
- 26 Sponsors

Introduction

Welcome to The London Group Open 2023. This is our 85th open exhibition since the formation of the Group in 1913. For 110 years we have been operating under the objective set out for us by our founding members - 'to advance public awareness of contemporary visual art' with exhibitions 'containing whenever possible non-members' work.' The Open is our opportunity to honour these founding principles. We are very excited to see this exhibition come to fruition, creating a dialogue between both members and non-members.

We had an incredible response to the open call. Hanging Team Lead Jockel Liess writes:

'The quality and scope of the nearly two thousand entries provided a beautiful and exciting snapshot of the current artistic practice in the UK. It was a wonderful and interesting privilege to get such a comprehensive insight into the aesthetic as well as socio-political concerns that are raised by and inform artists within their practice today. The selection panel tried to represent some of this great diversity within the difficult choices that we had to make to narrow down the entries for this year's exhibition. We do hope that our audiences and fellow artists will come to enjoy and appreciate the works as much as we do.'

The London Group are delighted to offer over £10,000 in prizes to the non-member artists and we are incredibly grateful to all our prize givers. Many have been awarding prizes for several years and we thank them for their generous support.

And of course, thank you to all the artists for sharing their remarkable insight, provocation, care and creativity. As Jockel Liess says, this is an exhibition 'that will stimulate your senses as well as your mind.'

Amanda Loomes, President

Many thanks to: Vice-President and Open Committee Lead Darren Nisbett; Deputy Vice-President Charlotte C. Mortensson; Hon Secretary Paul Bonomini; Treasurer Ian Parker; Exhibitions Committee Lead Gillian Ingham; Hanging Team Lead Jockel Liess, supported by the above plus Sandra Crisp, Marenka Gabeler, Tommy Seaward and Paul Tecklenberg; Online Communications Committee Genetic Moo and David Wiseman. Thank you to the London Group Secretary Amy Owen and the Selection Committee for all their time. And thanks to Hannah Luxton for producing this catalogue.

London Group Artists



Thoughts 2 by Moich Abrahams
Screen Print on Paper
30 x 21cm



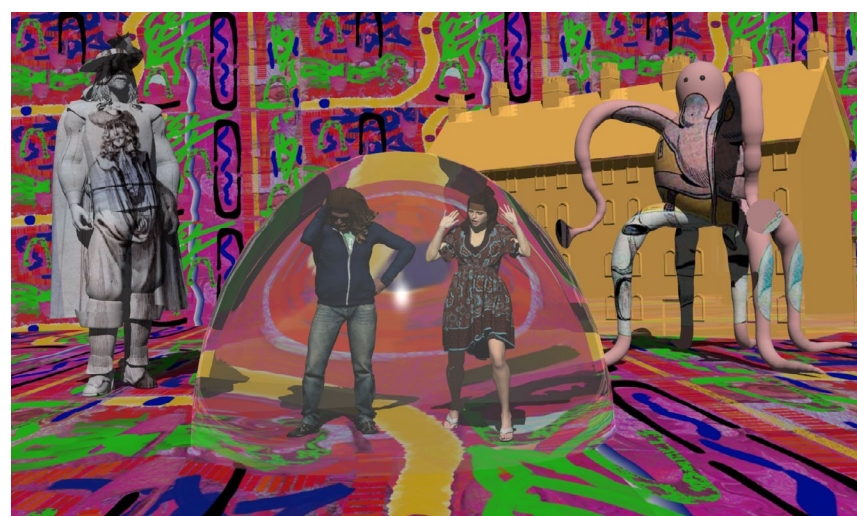
Cradle by Ade Adesina
Linocut Print
100 x 120cm



Kissing and Devotion by Wendy Anderson
Collage, Hand Made Oils on Canvas
55 x 46cm



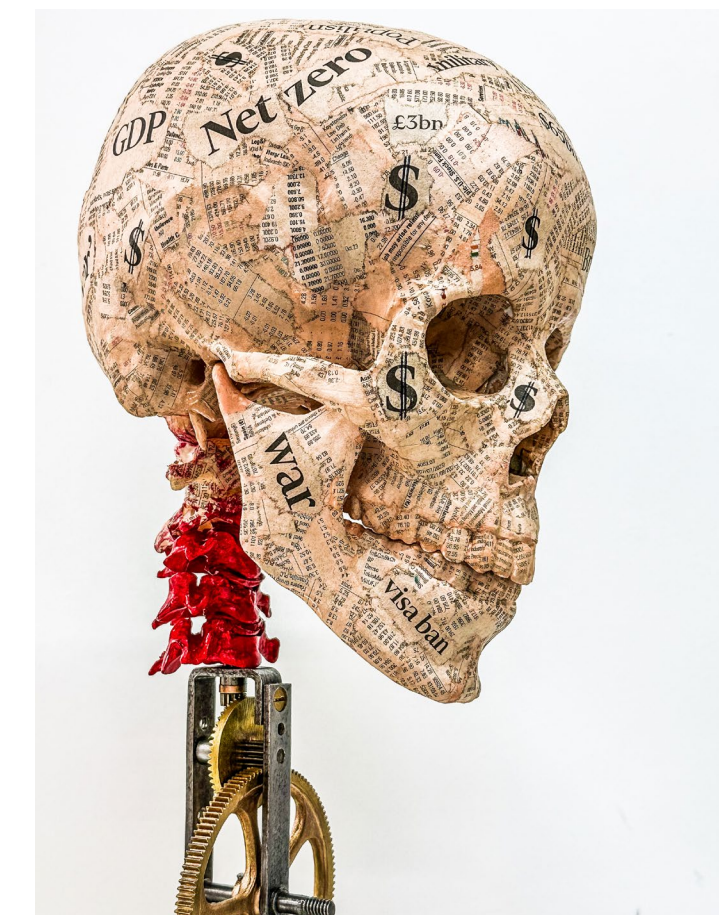
Turning the Corner by Victoria Bartlett
Paper, Wax
52 x 52 x 9cm



Lucky Man Meets Jelly Man by Bryan Bengel
CGI
100 x 59cm



Study for two figures by Slawomir Blatton
Mixed Media on Paper
100 x 120cm



On Closer Examination... by Paul Bonomini
Found Objects, Wood, Steel
150 x 75 x 75cm



Pious by Sir Frank Bowling
Acrylic on Canvas with Canvas Marouflage
71.6 x 74.3cm © Frank Bowling. All Rights Reserved,
DACs/Artimage 2023. Photo: Anna Arca



Enchea 9 by Mary Branson
Smoked Fired Terracotta Clay
42 x 28cm



Off The Wall by Clive Burton
Objet Trouvé, Chestnut Wood, Neon LED
270 x 120 x 120cm



The Ranger and the Rhino
by Laura and Paul Carey
Resin
24.5 x 61 x 30cm



FIVE SKETCHES. WHAT CONNECTS / WHAT DOESN'T? X (POSSIBLY) MARKS THE SPOT by Stephen Carley
Acrylic Paint, Spray Paint, Varnish, Found Objects, Substrates, 150 x 120 x 15cm



Göbekli Tepe 23 by Ece Clarke
Aluminium, Engraving Ink
36 x 27cm



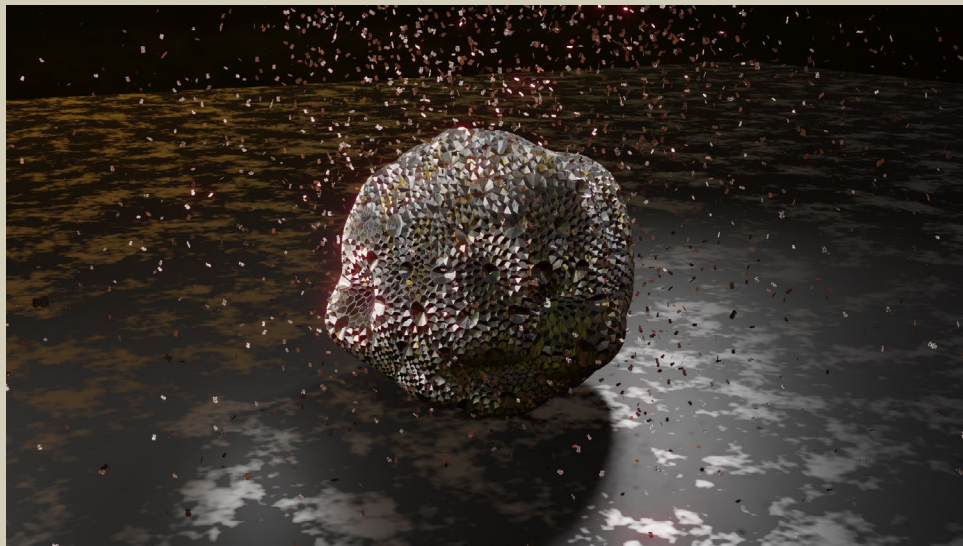
Ancient Dreamer by Robert Clarke
Acrylic, Sand on Paper
45 x 38cm



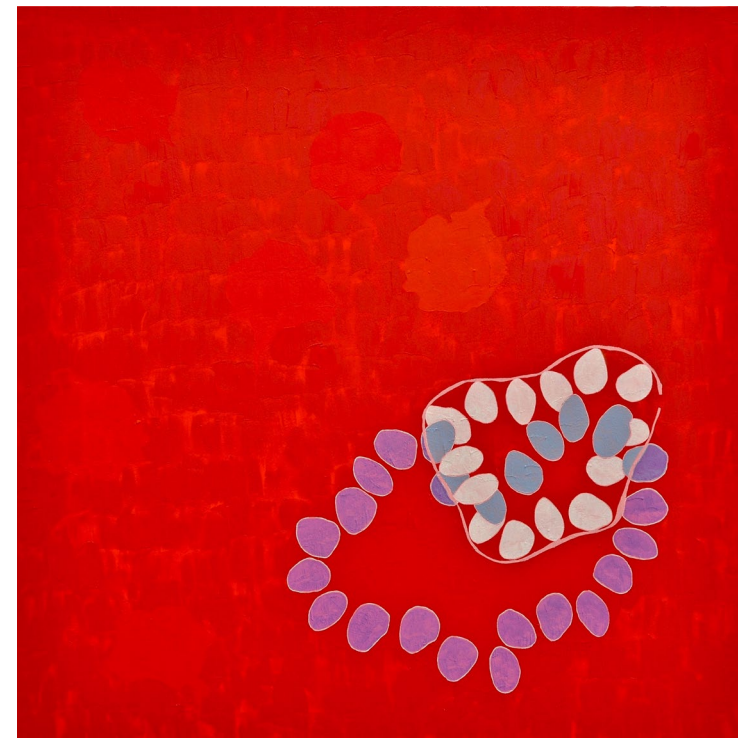
Pebbles by Peter Clossick
Oil on Canvas
100 x 120cm



Big Ben by Tim Craven
Watercolour
51 x 66cm



strange attractors [...1,000 years]
by Sandra Crisp
Video



Purly Hitch by John Crossley
Oil on Paper on Wooden Support
70 x 70cm



Nature Study Triptych (detail)
by Philip Crozier
Oil on Canvas
45 x 120cm



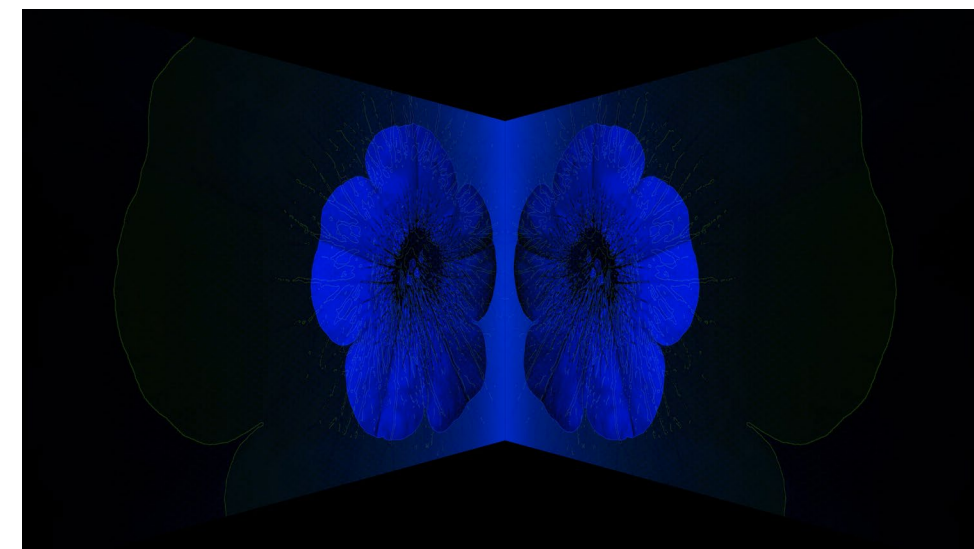
The dance of anthropocentrism
by Martin Darbyshire
Ply, Timber, Indian Ink, Rotating Motor
50 x 34 x 34cm



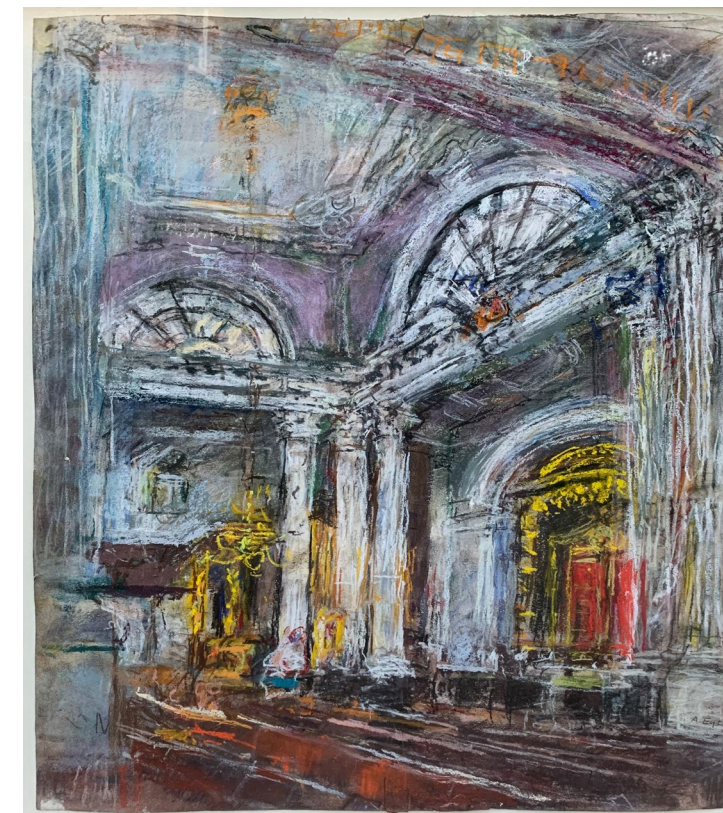
Cascade (2) by Jeff Dellow
Acrylic on Canvas
100 x 75m



Raze by Beverley Duckworth
Discarded Clothes, Binder, 52 x 47 x 10cm



Nexus by Angela Eames
Video-work, (Infnivid)



Saint Mary Woolnoth by Anthony Eyton
Pastel on Paper, 89 x 68cm



No. 3 by James Faure Walker
Gouache
28 x 38cm



**Caroline Appleton (b.1831-d.1911),
Manor Mental Asylum** by Eric Fong
Cyanotype on Paper
92 x 72cm



Components by Cadi Froehlich
Ceramic, Salvaged Copper
25 x 25 x 25cm



States of mind by Marenka Gabeler
Oil on Wooden Panels, 40 x 54cm



Bare Bones 1 by Tricia Gillman
Pencil, Charcoal, Canvas, Muslin
76 x 92cm



Fentanyl Philadelphia by Vaughan Grylls
Photograph
45 x 110cm



A Lowly Memento Mori
by Susan Haire
Photograph on Paper
150 x 100cm



Rowler Bowler by Alexandra Harley
Wood, Ceramic, Raffia, Paint
110 x 100 x 90cm



Alphabet Cubes - PAUSE by Aude Hérail Jäger
Wood, Acrylic Paint
200 x 40 x 40cm



Heat by Julie Held
Oil, Acrylic on Canvas
150 x 90cm



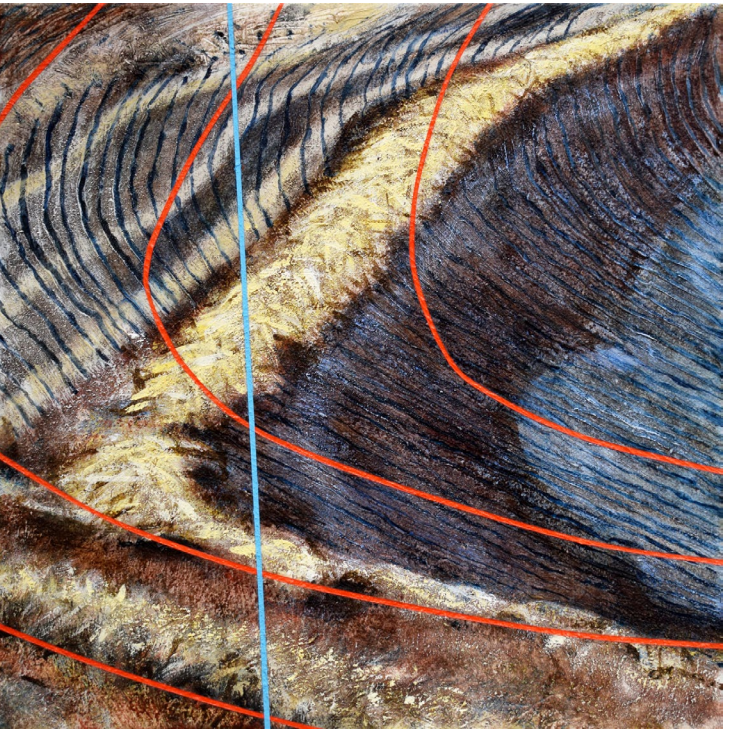
Pantheon by Martin Heron
Scrim on Board
35 x 28cm



Fractured Space by Alexander Hinks
Acrylic on Canvas
56 x 76cm



Blue Circle by Chris Horner
LED Curable Ink, Cement, Wax, Paint, Resin,
Industrial Gloss, Varnish on Polyethylene Plastic
48 x 47 x 5cm



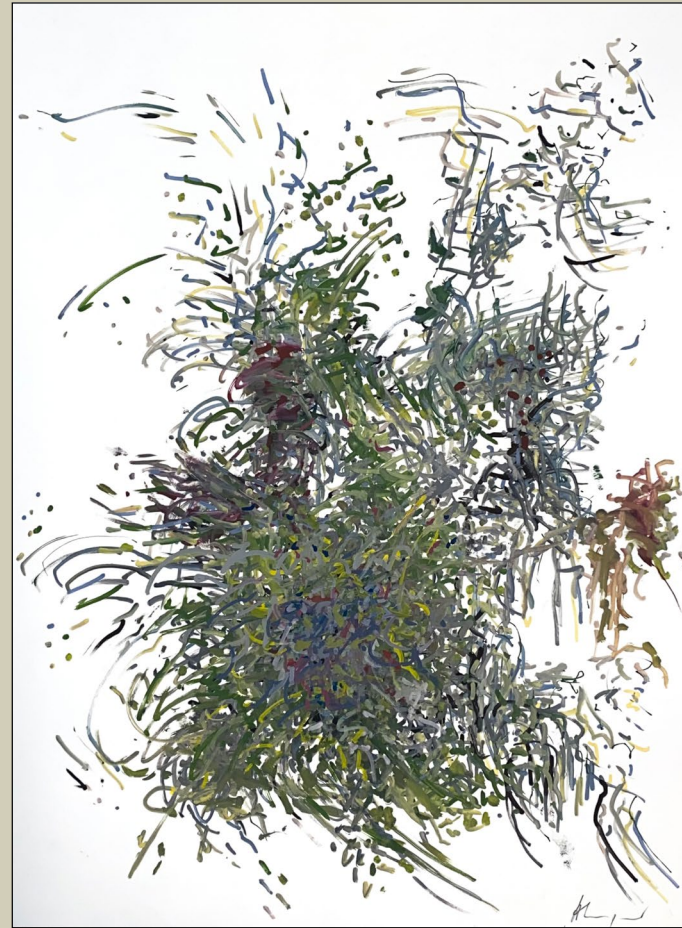
Hindon Harvest by Jane Humphrey
Acrylic on Canvas
33 x 33cm



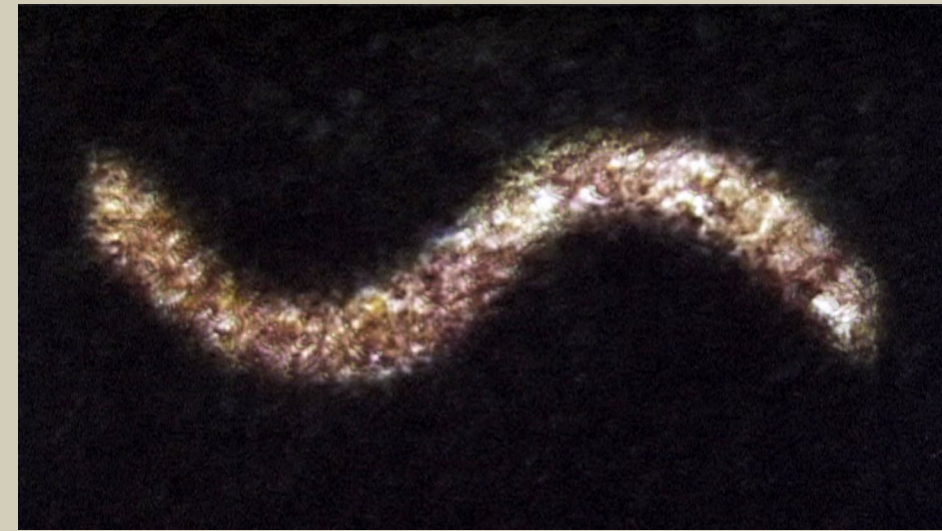
Blue Time by Gillian Ingham
Acrylic on Canvas
152 x 129cm



Oil Filled Radiator Handbag by Matthew Kolakowski
Recycled Cardboard
36 x 52 x 14cm



Vibrance by Anne Leigniel
Acrylic on Paper
76 x 56cm



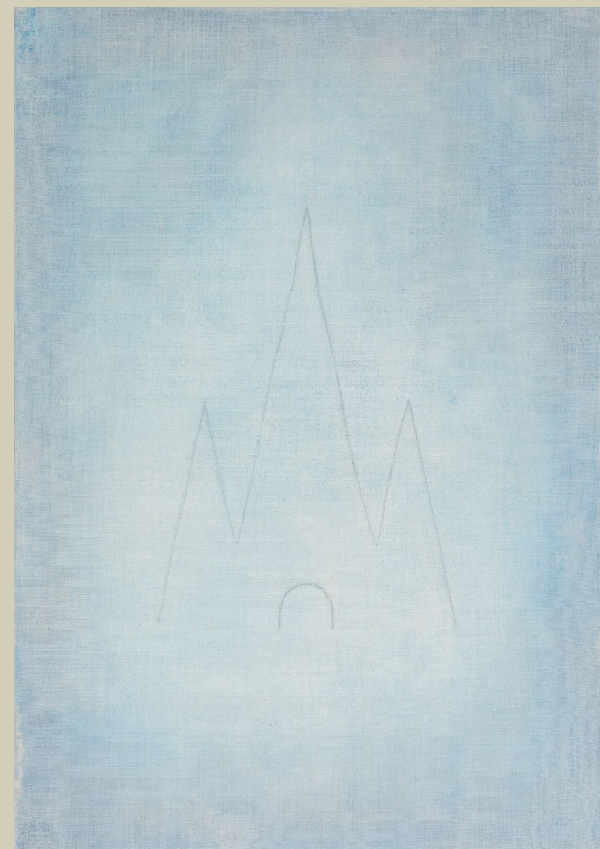
Vibrating Strings by Jockel Liess
Audiovisual Composition



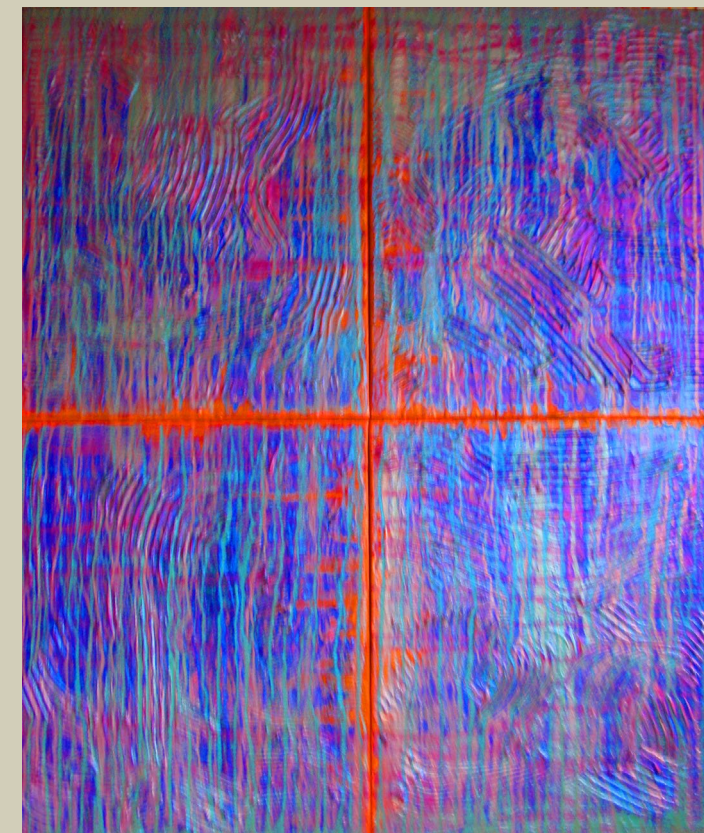
Lemon Drizzle by Amanda Loomes
HD Video
9 m 0s



Janus no. 2 by Jeff Lowe
Painted Aluminium
111 x 112 x 65cm



The Magic Mountain
by Hannah Luxton
Distemper, Oil, Pastel on Linen
51 x 36cm



Crossflow by Graham Mileson
Interference Colour
122 x 110cm



The Starfish by Genetic Moo
Code-Driven Artwork (a computer-based
work displayed on its own monitor)
110 x 62 x 14cm



Bunny Wailer (Rema, Trench Town)
by Charlotte C Mortensson
Archival Quality Digital Print
54 x 70 x 10cm



Lace by Kathleen Mullaniff
Graphite on Canvas on Wood Panel
121 x 91 x 6cm



The rear view by Darren Nisbett
Inkjet on Painted, Gilded Aluminium
50 x 60cm



Caleb and Ann by Eugene Palmer
Oil on Canvas
150 x 50cm



Untitled (Vasopressin) by Ian Parker
Acrylic, Marker Pen on Cotton Duck
120 x 120cm



Pelmet by Janet Patterson
Acrylic on Paper
44 x 35cm



The Architectural Uncanny - Subliminal Spaces I by Sumi Perera
Mixed Media Assemblage
150 x 100 x 50cm



Eidola by Steve Pettengell
Mixed Media on Canvas
150 x 114cm



Passing Through...Dropping In...For A While
by Michael Phillipson
Watercolour on Paper
41 x 53cm



For want of a better word
by Christopher Poulton
Lino, Metal, Metal Lock
8 x 40 x 40cm



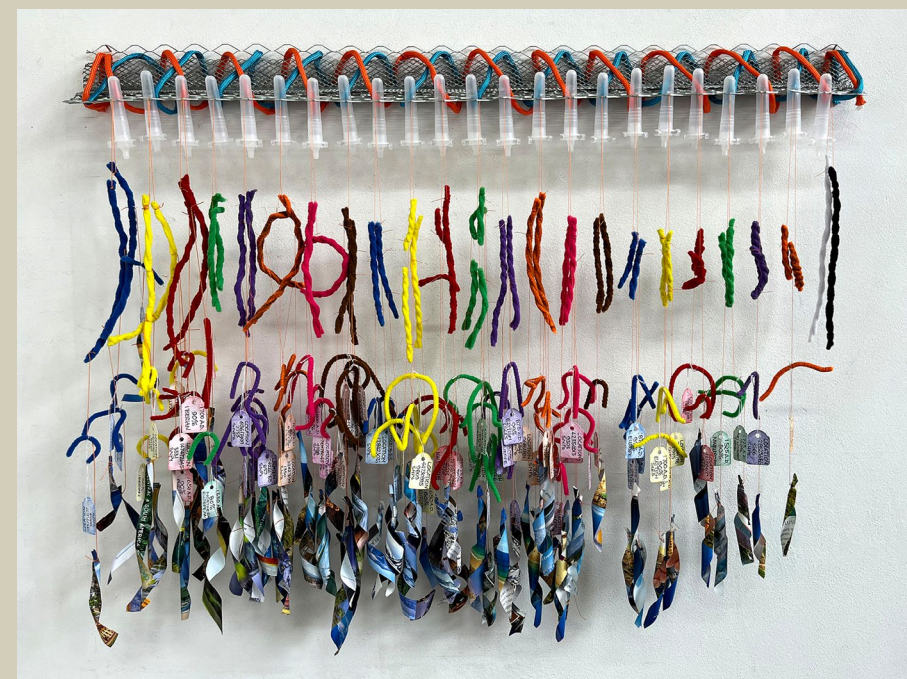
Deptford Drift by Daniel Preece
Oil on Canvas
120 x 150 x 10cm



No by Alexander Ramsay
Acrylic Paint, String, Detritus, Collage,
Cardboard on Canvas
150 x 120 x 5cm



The Shroud of Thorness by Victoria Rance
Cotton, Blackberry Dye, Watercolour,
Seeds, Thorns
150 x 150 x 5cm



Ancestors by David Redfern
Mixed Media
50 x 64 x 6cm



Bonobo and the human condition
by Tom Scase
Paints, Markers on Canvas
100 x 100cm



Etiquetas de ropa
by Tommy Seaward
Mixed Media, 82 x 48 x 6cm



Wall Painting by Philippa Stjernsward
Oil, Wax on Canvas on Board
53 x 95cm



Odessa Steps by Suzan Swale
Acrylic on Canvas
150 x 120cm



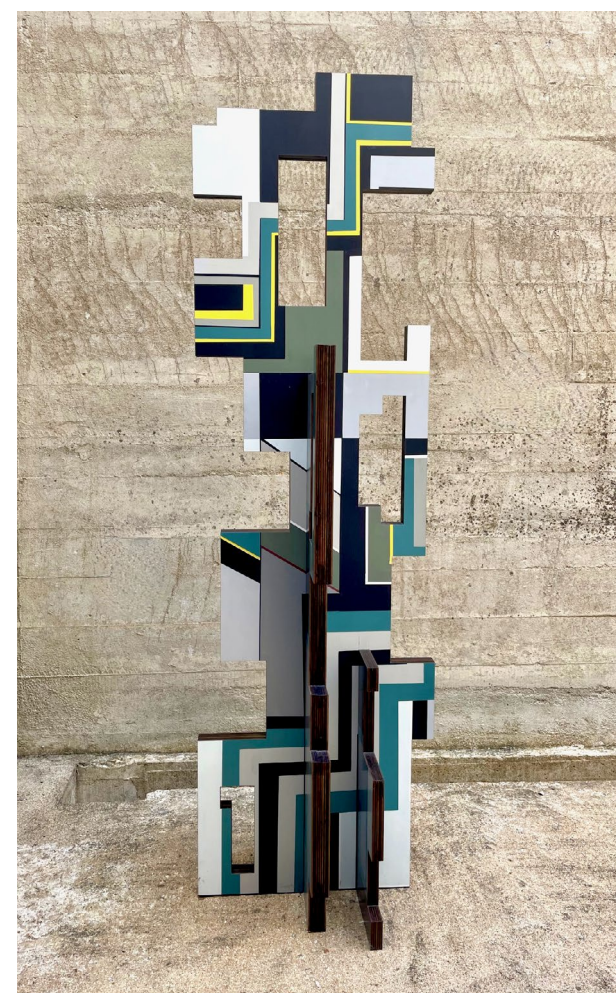
Unravel by Almuth Tebbenhoff
Steel
90 x 80 x 6cm



Three by David Tebbs
Oil on Canvas
76 x 120cm



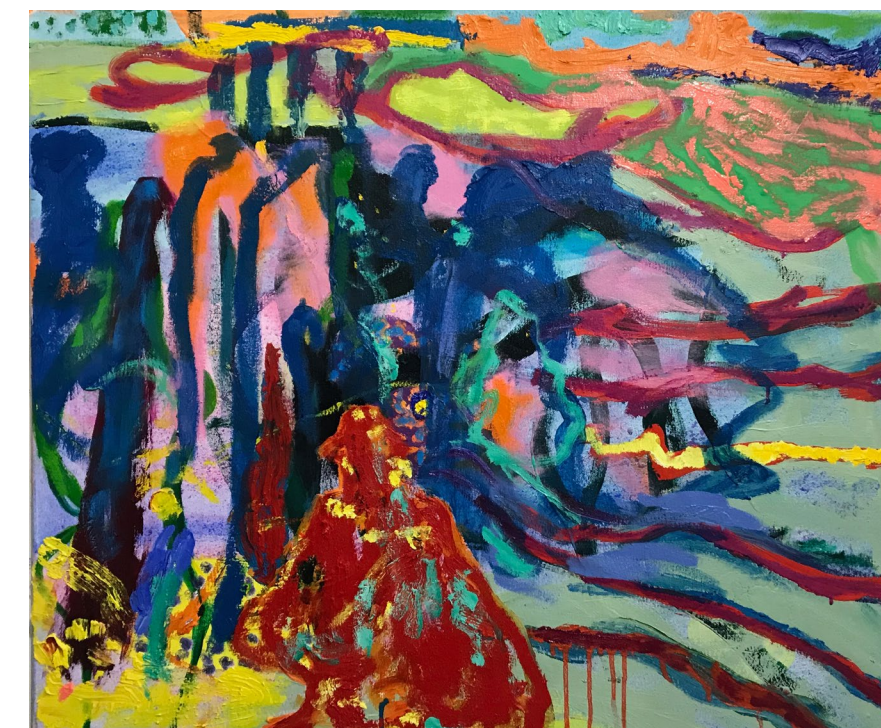
The Great Escape by Paul Tecklenberg
Barbed Wire, Nitrous Oxide Bulbs
65 x 50 x 30cm



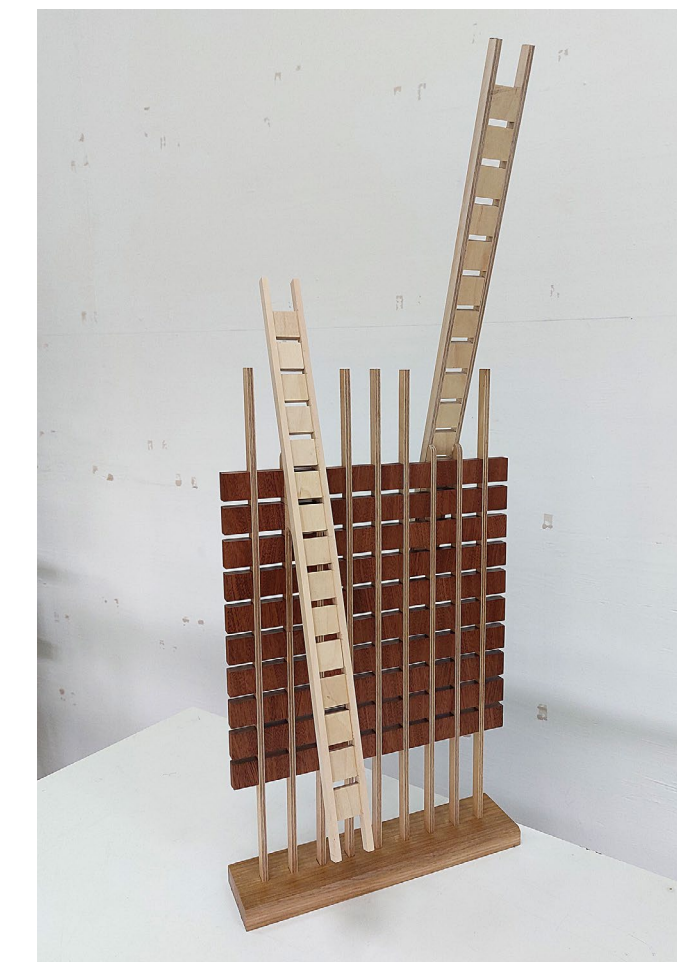
GHOST C by Lisa Traxler
Hand-Painted Acrylic on Laser Cut
Poplar Plywood, 176 x 60 x 54cm



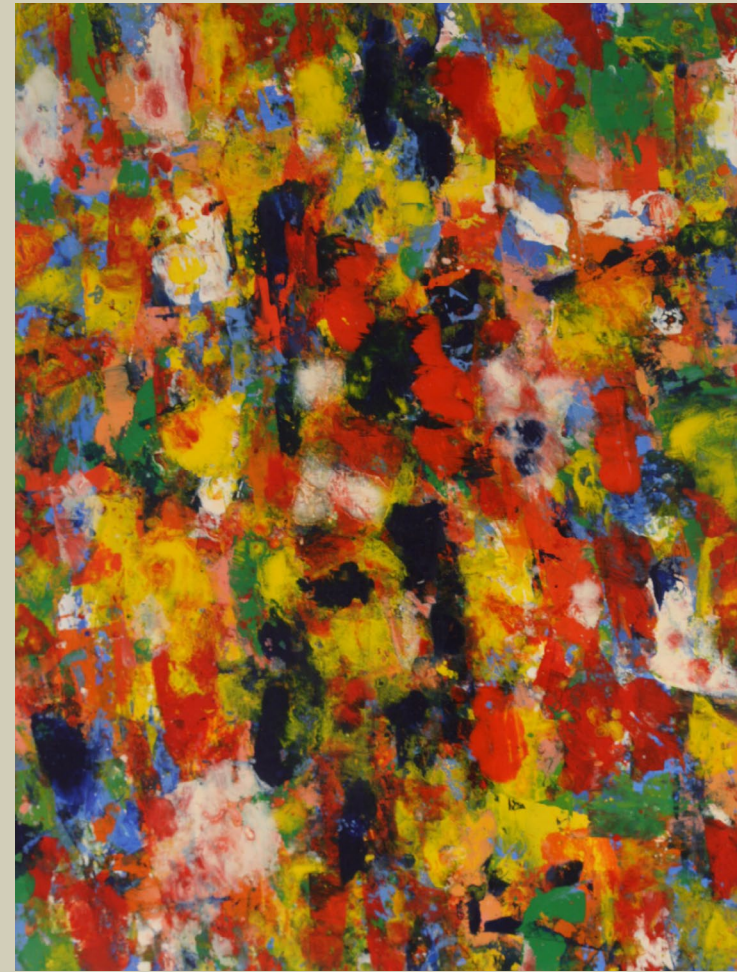
Ragtime by Philippa Tunstill
Oil on Board
100 x 100cm



Ode of an Obliterated Pon
by Joshua Uvieghara
Oil, Pigment on Canvas
75 x 90cm



The Evening Echo by Bill Watson
Wood Construction
80 x 31 x 20cm



Gene sequence (Blast)
by Neil Weerdmeester
Oil on Linen
120 x 90cm



Page 3 by Tisna Westerhof
Embroidery Thread, Cotton, Board
40 x 50cm



Grenfell Tower, ever present
by Susan Wilson
Oil on Linen
110 x 76cm



A Space to Dance by Erika Winstone
Watercolour, Gouache on Linen
150 x 120cm



Rocky River, Dusk Approaching near Charmouth by David Wiseman
Acrylic on Canvas
76 x 102cm



Birds in my Head by Carol Wyss and Victoria Arney
Printmaking
150 x 240cm



Capturing Time by Colette Morey de Morand
Acrylic on Linen
60 x 50cm



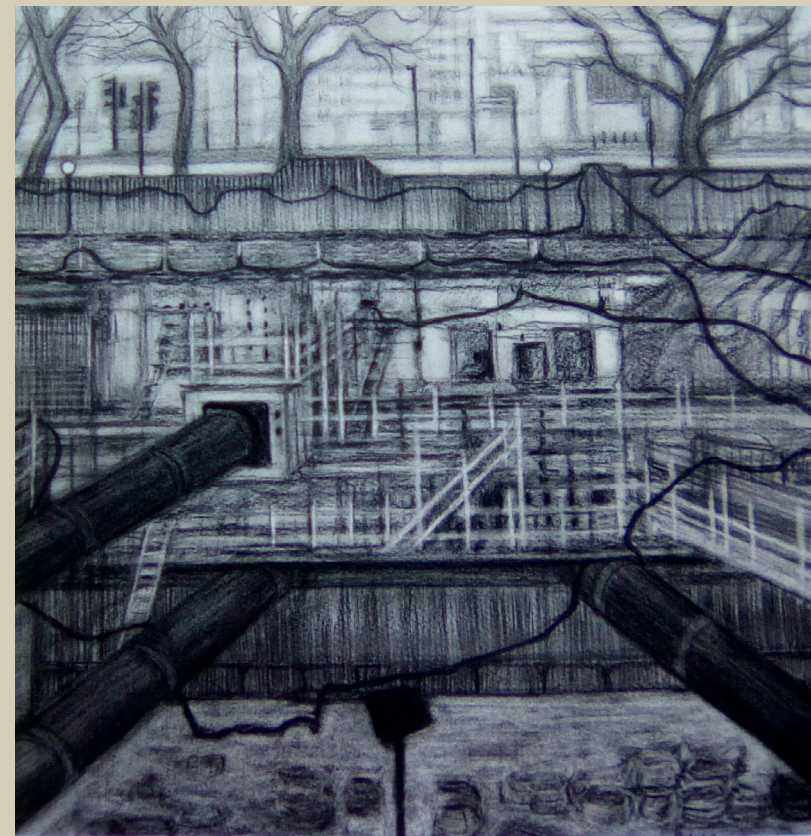
Bob Going to Heaven Quickly by Antony Green RA
Screen-print
76 x 56cm

The exhibition includes works by three longstanding London Group members who passed away in the last twelve months.



Under Eaves by Eric Moody
Mixed Media
30 x 44 x 7cm

Open Submission Artists



Bankside Yards 2 by Patricia Adderley
Charcoal, 40 x 40cm



#1120722 by Jemma Appleby
Charcoal on Paper
70 x 70cm



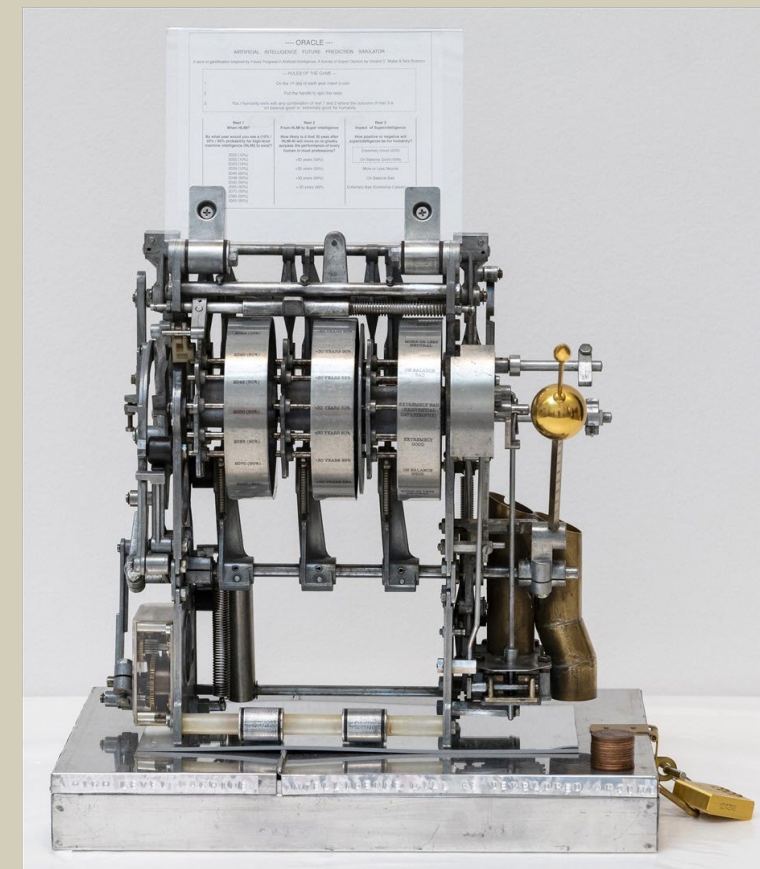
Sleeve Shock by Jonathan Armour
Time-based Digital



Critical Clouds by Caroline Ashley
Mixed Media
90 x 40 x 100cm



Pocket Springs – Vispring 1960 by Cash Aspeek
Photographic Fine Art Print Mounted on Aluminium
60 x 40cm



ORACLE (ARTIFICIAL INTELLIGENCE FUTURE PREDICTION SIMULATOR) by David Aston
Deconstructed 1956 One Arm Bandit, 1950's Bank Safety Deposit Box, Aluminium, Brass, Plastic, Copper One Penny Coins, 54 x 40 x 150cm



Plastic Bottles Plucked from the Sea by Helen Banzhaf
Embroidered Textiles
10 x 21cm



Fragment, Terra Brasilis Series by Barr Studio
Ceramic Sculpture, 26 x 25 x 36cm



Solitude by Nicola Beattie
Charred, Blackened Sycamore on Bog Oak
180 x 50 x 4cm



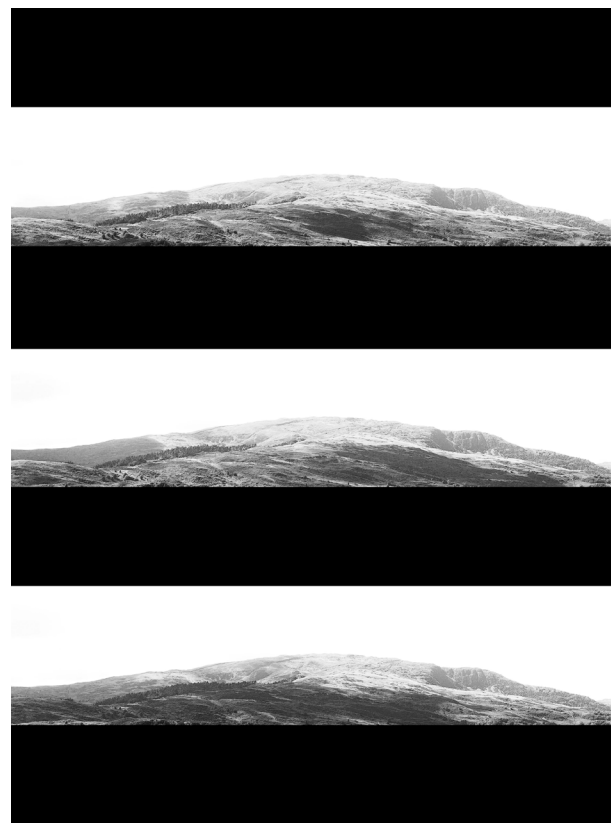
Capacity by Barbara Bayer
Adobe Slate, Wood, Metal, Foam
140 x 65 x 55cm



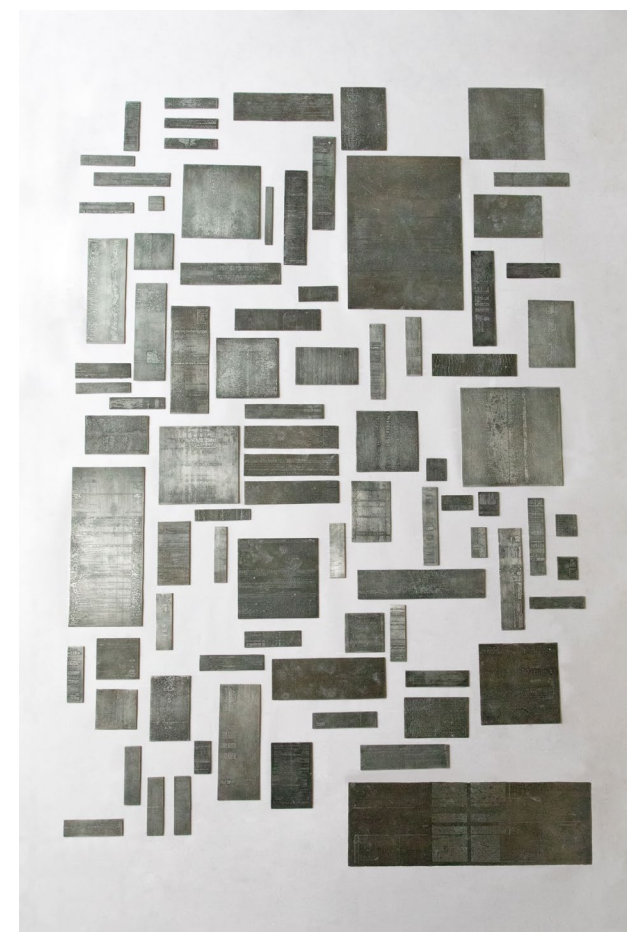
Light Up! by Bislacchi
Acrylic Pigment on Canvas
83.5 x 52 x 55cm



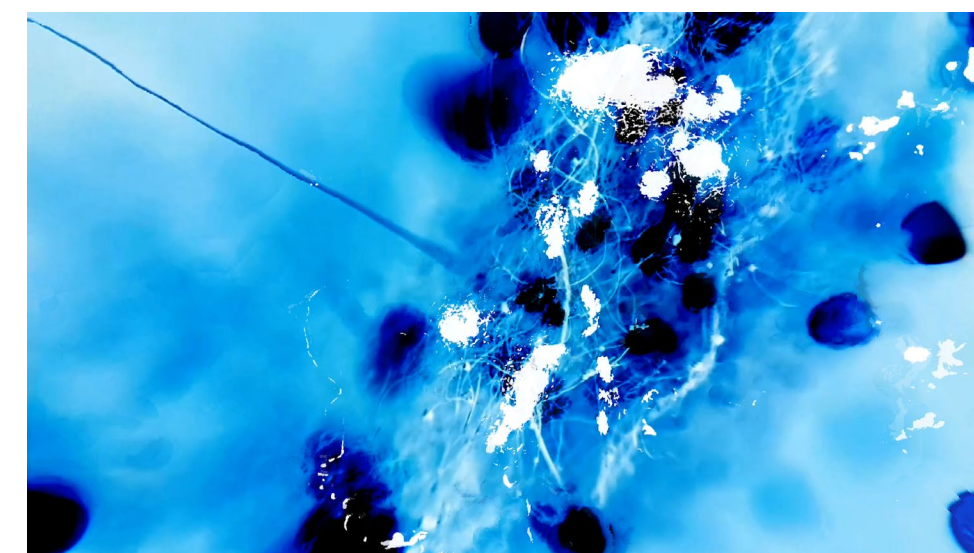
Billow by Julie Brixey-Williams
Concrete, PVC, Textile, Metal, Ink
18 x 100 x 20cm



Mountain (Toward Y Garn, Rhinogydd. 9.8.23, 15:20 - 15:36) by Richard Brooks
Digital AV
16m, 54s



Inscriptions (II) by William J. Brooks
Etched Zinc Plates on Wood
120 x 85cm



Steel Wool by Jonathan Bower
Digital Video
3m 46s



Shadow Sculpture 29 by Lesley Bunch
Oil on Wooden Panel
50 x 50cm



Beyond Grief by Caroline Burgess
Calico, Slate
30 x 119 x 91cm



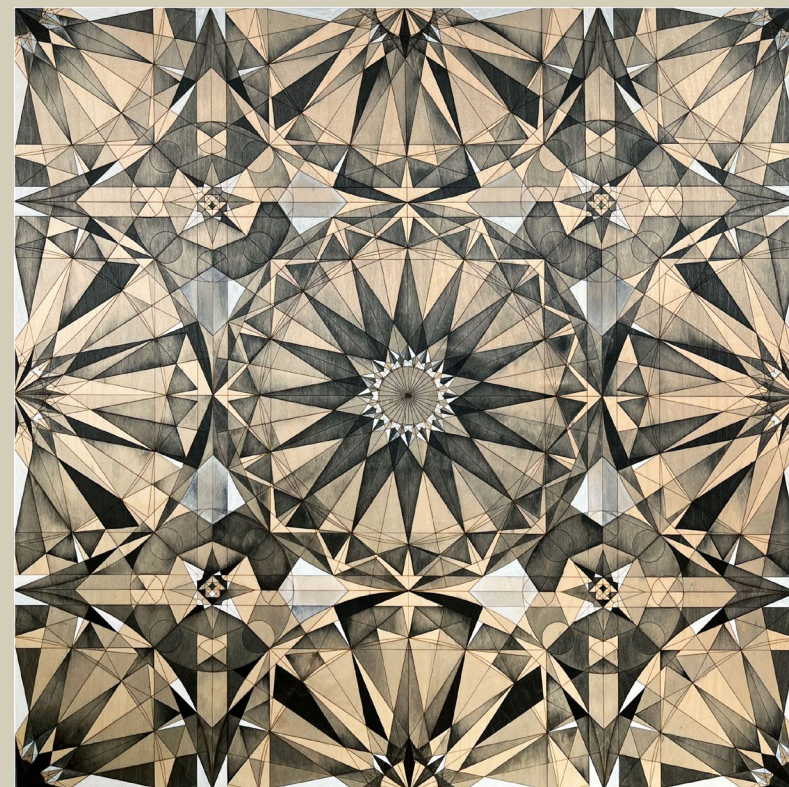
Circle on Herringbone Grid Fragment XXV by Tom Cartmill
Ink on Paper, Mounted on Aluminium
67 x 28cm



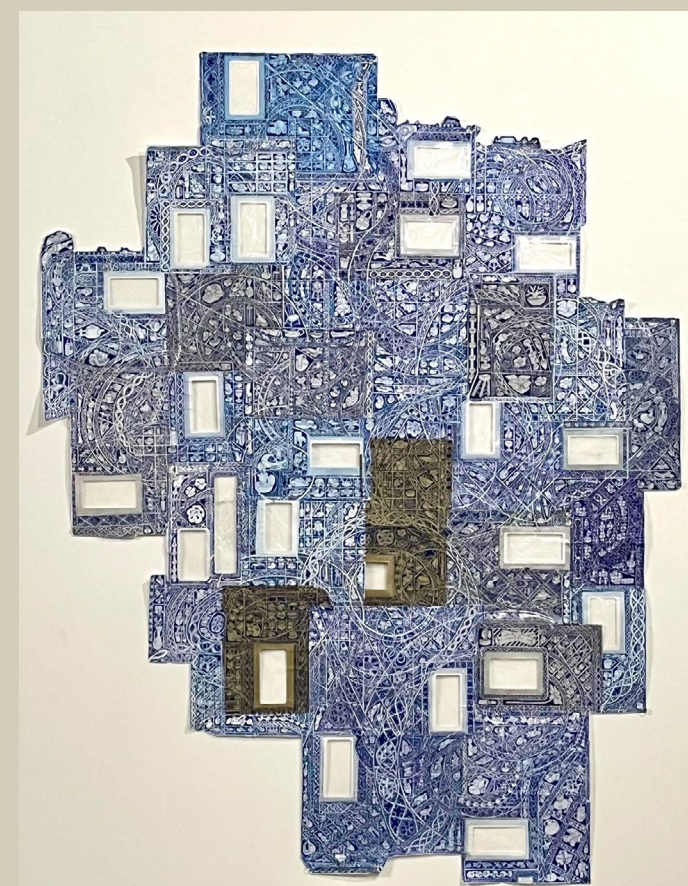
Necessary by Pippa Charlesworth
Mixed Media, Colour Charts, Lego
122 x 92cm



Dockyard Diary: June & February
by J. Yuen-Ling Chiu
Multiplate Etching on Paper
66 x 86cm each



DW10, Driftwood Series by Sara Choudhery
Acrylic Ink, Gouache, Laser Engraved
Drawing on Wood
85 x 85cm



Moir√© by Gary Clough
Ink on Reused Envelopes
155 x 119cm



Sugar Rush by Niamh Collins
Oil on Canvas
88 x 94cm



Asomatous by Lindsay Connors
Plaster, Pigments, Etching, Digital Print and
Coloured Pencil, Metal Hardware, Scaffolding
70 x 70cm



Lacuna 4 by Josephine Coy
Photomedia Archival Giclee Print
46 x 63.5cm



Into the Darkness by Shona Davies, David Monaghan and Jon Klein
Mixed Media Installation
61 x 41 x 174cm



FAN DRAWING 4 by Emma Davis
Charcoal on Paper
82 x 64cm



Being by Mandeep Dillon
Steel, Latex, Silicone, and Flock Powder
120 x 50 x 45cm



Tarmak by Stathis Dimitriadis
Ceramic with Basketball Rubber
28 x 24 x 24cm



In Tension by KV Duong
Acrylic, Concrete Grout, Transfer on Found Polystyrene, Steel, Cotton Thread, 45 x 15cm



Imitations by Amanda Egbe
Video
7m 44s



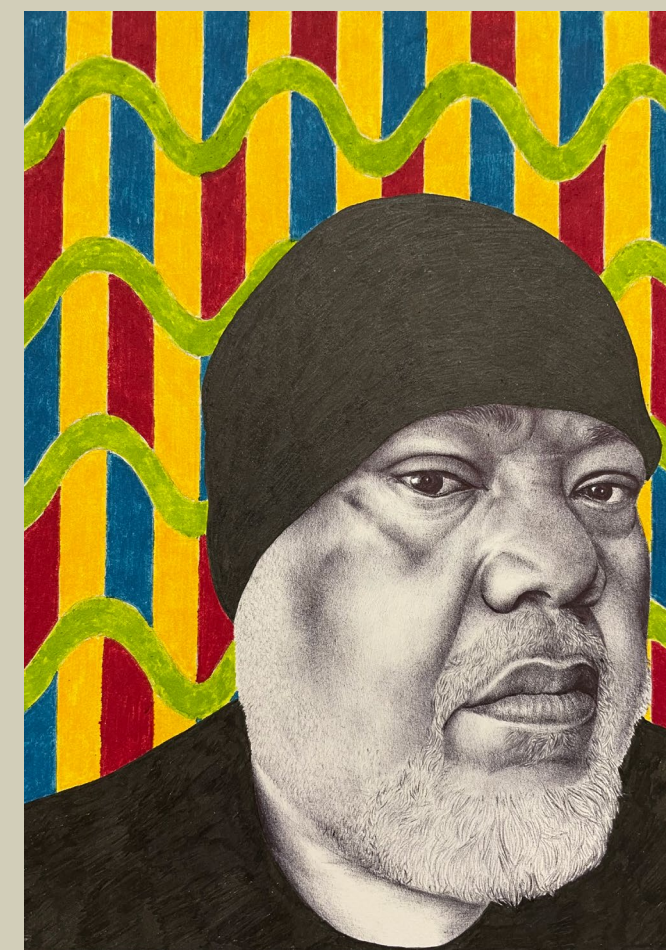
Elevation of an Art Museum (Ransacked)
by J. G. Fox
Print on German Etching Paper
63 x 88cm



Who Am I? by Beatrice Galletley
Ceramic
52 x 36 x 40cm



Lean In by Emilia Gonzalez
Clay, Rubber, Vapor Distilled Scent
150 x 150cm (variable)



Big Mo by Habib Hajallie
Ballpoint Pen, Coloured Felt Pens on
Paper
21 x 15cm



New Weald by Lizzie Hill
Waste Materials, Wire
110 x 35 x 30cm



An Inconvenient Cumulus
by Sara Hindhaugh
Pastel, Coloured Pencil on Silk
57 x 61cm



Slick? by Catherine Jacobs
Photographic Print on Hahnemühle
Bamboo Paper
32 x 24cm



Wellspring by Simone Kennedy
Soft Sculpture
30 x 15cm



Subjective Mundane by Amber Lily
Dyed Fabrics, Collage, Screen-print,
Embroidery on Various Fabrics, 129 x 32 x 27cm



Studio Interior with Yellow Chair
by Jason Line
Oil on Canvas, 124 x 94cm



Mask #2 (Martyr) by Hywel Livingstone
Stainless Steel
137 x 40 x 40cm



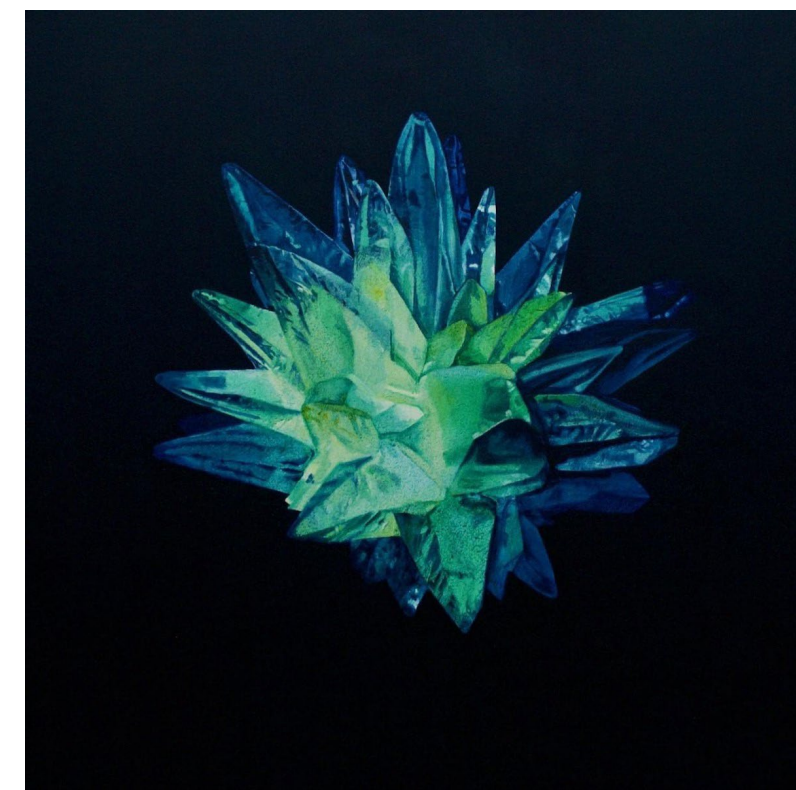
Concrete Foot by Kurtiss Lloyd
Black and White Pigment Print on
Hahnemühle Museum Etching Paper
100 x 100cm



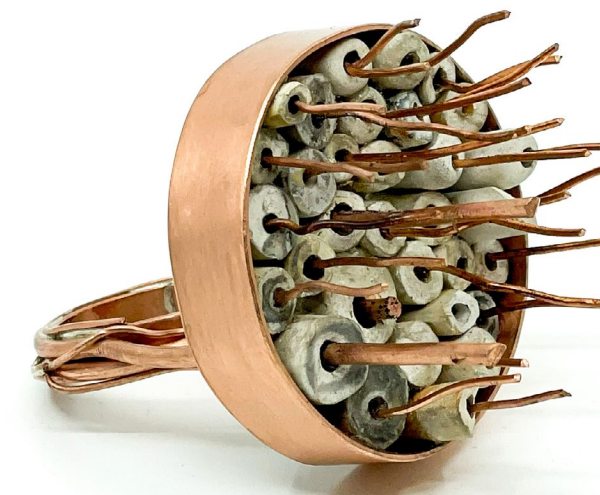
Infinite Walk by M. Lohrum
Moving image. Participative Performative Drawing
10m 47s



Climbing Shadow by Katherine Lubar
Acrylic on Canvas
59 x 60cm



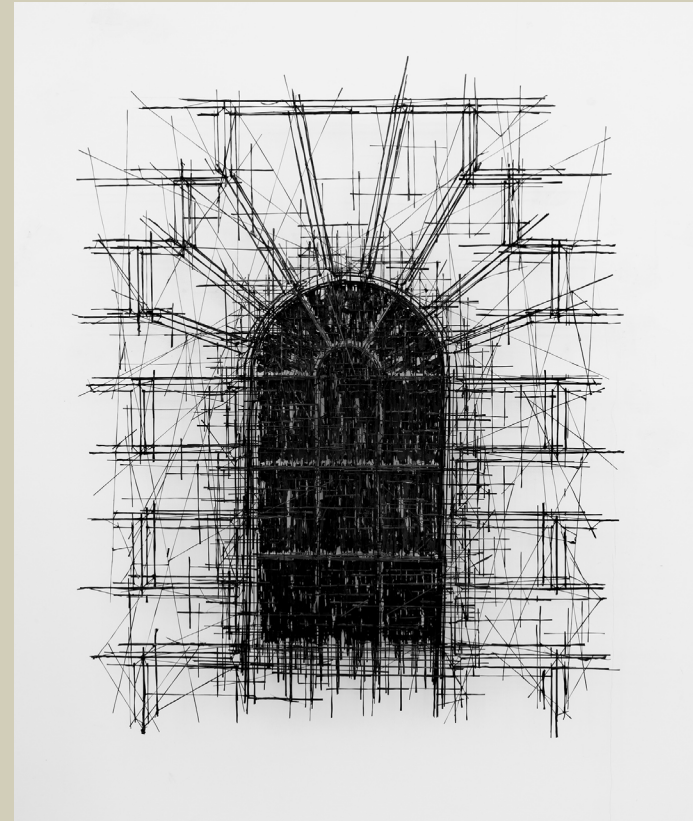
And blazed through the sky
by Paula MacArthur
Oil on Canvas
100 x 100cm



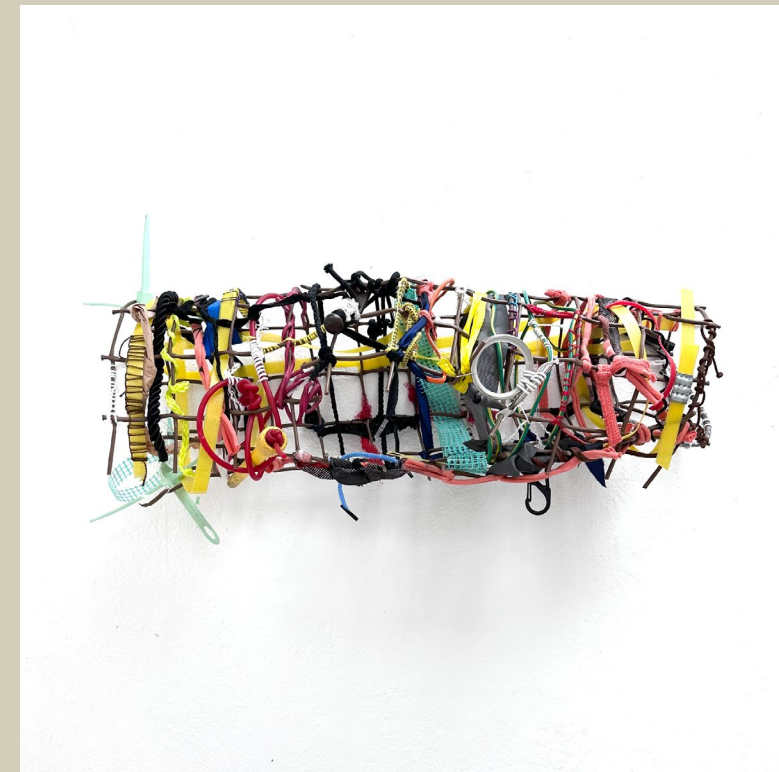
My Eye Hurts by Sara Marshall
Copper, Clay Pipe Stems
15 x 15cm



Unequal Forms 05 by Esther Neslen
Ceramic, Oxide, Gold Pigment
30 x 30 x 40cm



Facade by Peter Newell-Price
Carbon Fibre
93 x 76cm



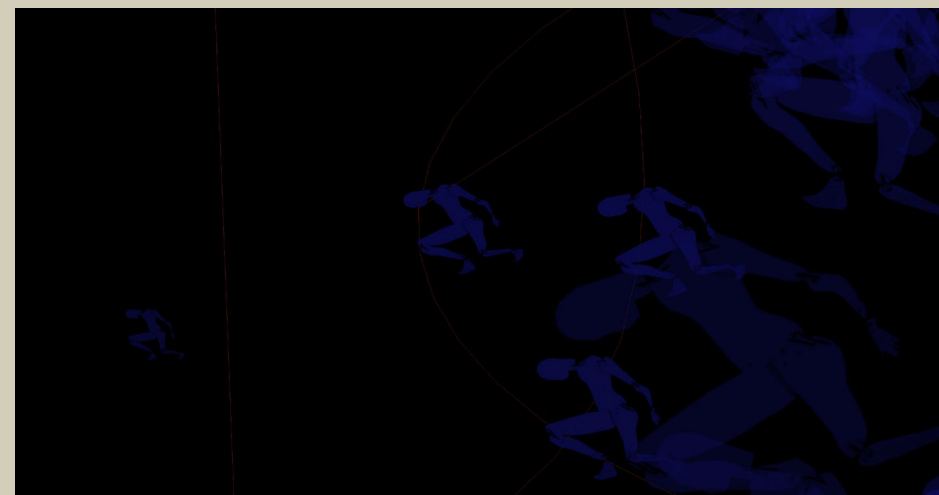
The Nest by Iza Nez
Recycled Plastic, Fibre, Metal
33 x 59 x 22cm



Curved Support by Jen Orpin
Oil on Canvas
16 x 26cm



Nature Study #2 by Brigitte Parusel
Drawing on Paper, Folded
100 x 50 x 60cm



Royal Blue Phalanxes by Maybelle Peters
Digital Video
3m 19s



Fleeting (encounters) by Laura Porter
Hand-cut Reclaimed Clothing, Steel
120 x 30 x 80cm



Back to nature by Rosey Prince
Oil, Distemper, Charcoal on Canvas
65 x 85cm



Allotment. Dormant by Paul Regan
Oil on Board
65 x 96cm



156 by Sabrina Rodrigues
Installation: Oil Paint on Used Khadi Paper
72 x 52cm



Each day is different by Tracey Rowledge
Permanent Pen, Acrylic Gesso on Millboard
50.8 x 70cm



Fragmented Globe in 24 Pieces
by Loraine Rutt
Porcelain, 150 x 80cm



The Most Beautiful Anthropocene # 34
by Andreas Scholz
Cyanolumen on RC Photographic Paper
47 x 35cm



Stirrings No. 2 by Seamus Staunton
Pen on Paper
66 x 71cm



Ironstone Pond by Sayako Sugawara
Photo Emulsion on Paper
30 x 40cm



WITHIN by Christy Symington
Crystacal with Pigment, Sand
145 x 40 x 40cm



Sex Education for Girls by Ciana Taylor
Moving Image
8m 55s



Red Lines by Hanna ten Doornkaat
Acrylic, Leather Binding Thread, Jute, Felt, Wood
30 x 50cm



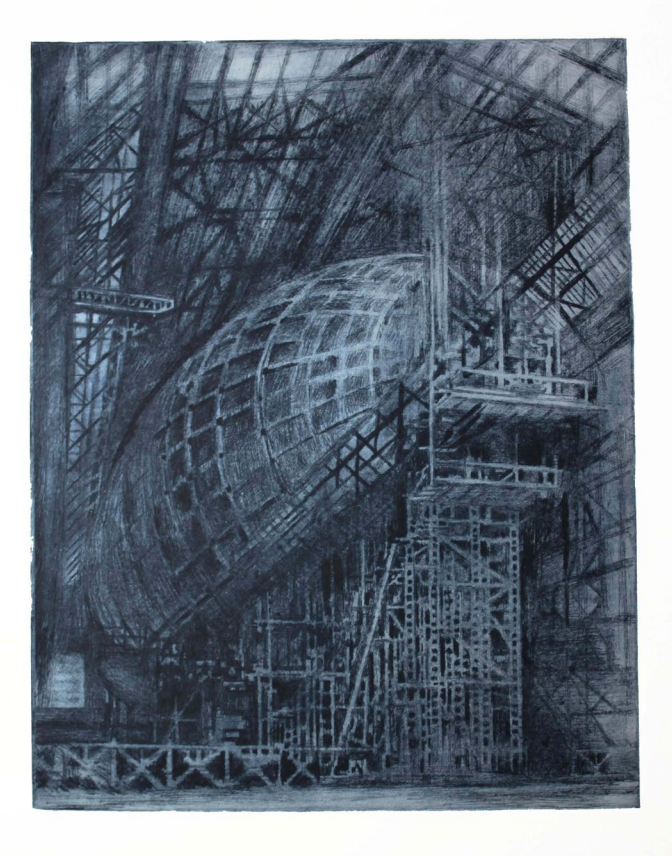
Iris & Willow by Marcia Teusink
Mixed Media Sculpture
140 x 120cm



Every Fibre by Ania Tomaszewska-Nelson
Video
3m 26s



Palm of the Hand Painting by Henry Tyrrell
Oil, Sand, Marble Dust on Linen
20 x 25cm



Airframe III by Kirsten van Schreven
Drypoint Print on 280gsm BFK Rives Paper
51 x 42cm



Storm, bridge and lights
by Fernando Velazquez
Oil on Canvas
61 x 81 cm



Devonian Fell by Tobias Wilkinson
Acrylic Paint, Marble Dust on Plywood
34 x 54cm



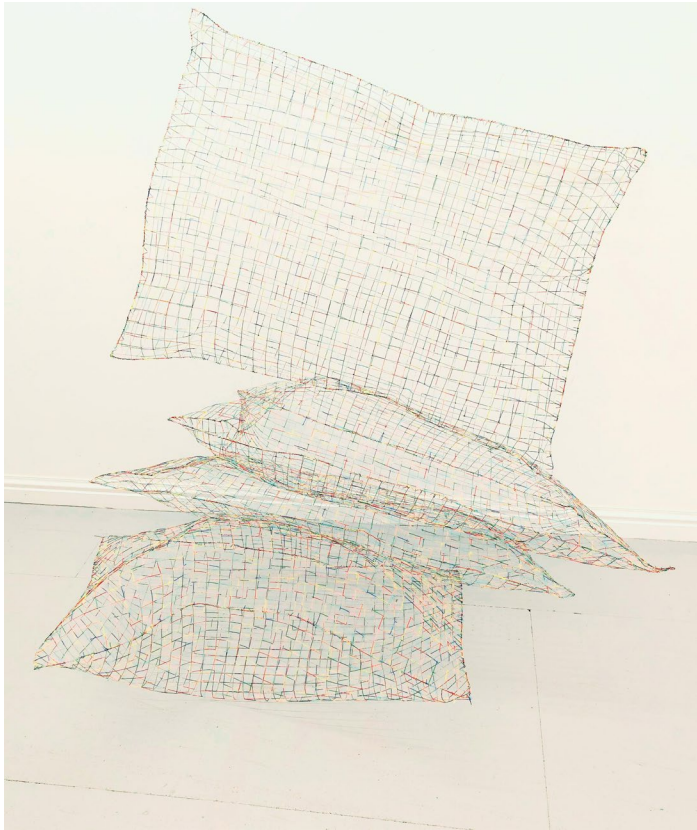
Untitled (Medicine Corrupted 2) by Stef Will
Dye-Sublimation Print on Aluminium
70 x 50cm



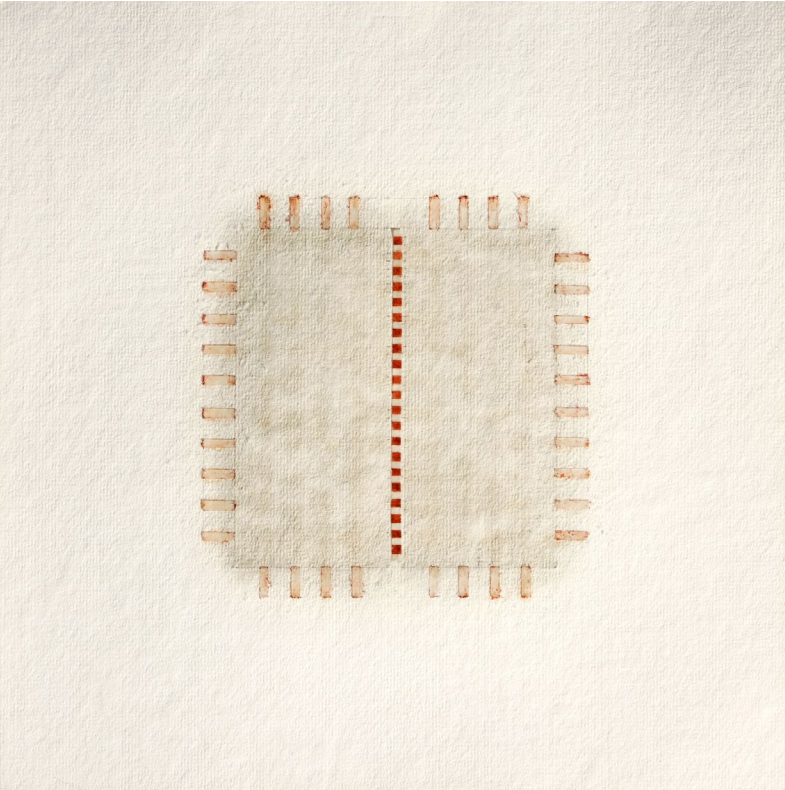
Chalk by Mandy Williams
HD Video
5m 52s



Balloon Bag by Kate Wilson
Oil on Canvas
144 x 84cm



I can't remember my dreams
by Diana Wolzak
Sculpture
110 x 90 x 60cm



Boundaries by Eleanor Wood
Watercolour, Wax, Oil, Pencil on Cotton Paper
30 x 30cm



Nesting by Angela Wright
Installation: Wire, Paper, Plastic, String, Paint
45 x 45 x 25cm



Grape Spoon by Yang Yumeng
Woven Textile
65 x 35cm

Officers, Committee Members and Membership 2023

Officers

President

Amanda Loomes

Vice-President

Darren Nisbett

Deputy Vice-President

Charlotte C Mortensson

Treasurer

Ian Parker

Hon. Secretary

Paul Bonomini

Working Committee

The above 5 Officers and:

Sandra Crisp

Marenka Gabeler

Alexandra Harley

Genetic Moo

Gillian Ingham

David Redfern

David Wiseman

Carol Wyss

Membership Committee

Members of the Working Committee and:

Clive Burton

Jockel Liess

Almuth Tebbenhoff

Steve Pettengell

Observers

Mary Branson

Martin Darbyshire

Anne Leigniel

Hannah Luxton

Lisa Traxler

Joshua Uvieghara

Membership

The above Officers, Committee Members, Observers and:

Moich Abrahams

Ade Adesina

Wendy Anderson

Victoria Arney

Victoria Bartlett

Bryan Benge

Slavomir Blatton

Sir Frank Bowling OBE RA

Paul & Laura Carey

Stephen Carley

Ece Clarke

Robert Clarke

Peter Clossick

Robert Coward* Honorary Member

Tim Craven

John Crossley

Philip Crozier

Gus Cummins RA

Jeff Dellow

Mark Dickens

Beverley Duckworth

Mark Dunford

Angela Eames

Anthony Eyton OBE RA

James Faure Walker

Eric Fong

Cadi Froehlich

Tricia Gillman

Vaughan Grylls

Susan Haire Life member

Julie Held

Aude Hérail Jäger

Martin Heron

Alexander Hinks

Chris Horner

Jane Humphrey Life Member

Sam Jarman

Annie Johns

Judith Jones

Matthew Kolakowski

Mike Liggins* Honorary Member

Pauline Little

Jeff Lowe

Graham Mileson

Peter Morrell

Kathleen Mullaniff

Micheál O'Connell / MOCKSIM

Eugene Palmer

Claire Parrish

Janet Patterson

Sumi Perera

Michael Phillipson

Chris Poulton

Daniel Preece

Alex Ramsay

Victoria Rance

Simon Read

Tom Scase

Tommy Seaward Life member

Philippa Stjernsward

Christine Styrnau* Honorary member

Suzan Swale

David Tebbs

Paul Tecklenberg

David Theobald

Michael Thorpe

Philippa Tunstill

Bill Watson

Neil Weerdmeester

Tisna Westerhof

Anthony Wishaw RA

Susan Wilson

Erika Winstone

Gary Wragg

The London Group would like to thank all our Prize Sponsors for their generous support

FELIX & SPEAR



CHELSEA
ARTS CLUB
TRUST

JEFF LOWE SCULPTURE PRIZE



Instagram@thelondongroup

Facebook@thelondongroup1

Twitter@TheLondonGroup1



thelondongroup.com

enquiries@thelondongroup.com