

Press Release - November 2017

EMBARGOED UNTIL 27 NOVEMBER 2017, 7PM



The London Group Open 2017 Prizewinners announced

Exhibition continues until **1 December 2017** at **The Cello Factory**, London.
33-34 Cornwall Road, London SE1 8TJ, 2pm - 6pm daily.

The UK's longest-running and most prestigious artists' collective, The London Group, is delighted to announce the prizewinners of its 83rd London Group Open. Following a very successful exhibition held in two parts at The Cello Factory, London, eleven non-member artists are presented with a generous selection of cash and material prizes.

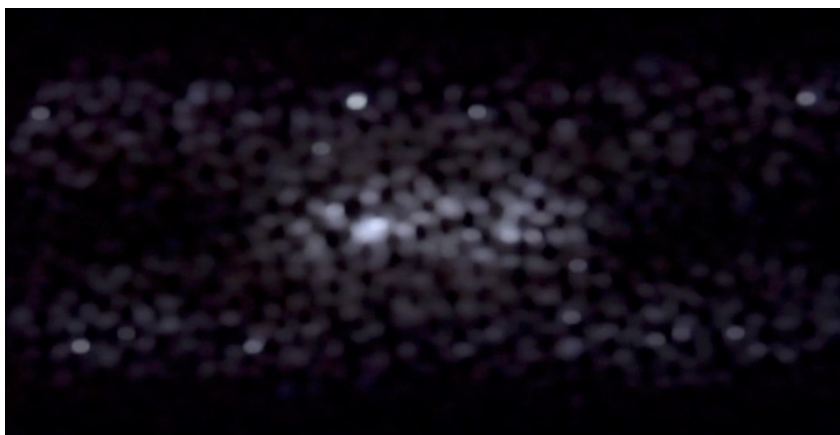


Stephen Carley, Drawing 120



Micheál O'Connell, *Navigation*

Stephen Carley, Micheál O'Connell and **Jockel Liess**, recipients of the **President's Prize**, will take part in a three-person exhibition at The Cello Factory in 2018. Stephen Carley's primary interests are context, process and materials - he often re-appropriates and reconfigures discarded materials found between his home and studio. Micheál O'Connell aka MOCKSIM also employs his immediate surroundings as a key point of reference. His video animation *Navigation* uses samples recorded during a drive, with 7 maps and 1 satellite navigation system running concurrently, the dynamic filmwork serving as an interrogation of everyday mechanisms. Jockel Liess is an audiovisual artist and composer influenced by Post-Cagean aesthetics and artistic traditions of visual and musical minimalism. *Ephemeral*, his audio-visual recording of a digital live-generative environment, is an exploration of momentary music; an abstract current of pitch, timbre, texture and pulse, propelled by the passing of time.



Jockel Liess, *Ephemeral*

The £1500 Vic Kuell Memorial Prize for Innovation is awarded to **Shona Davies, Dave Monaghan & Jon Klein** for their 3D installation *Never Eat The Cone*, a collaborative work comprising an animated and immersive film presented in a domestic milieu.



Shona Davies, Dave Monaghan & Jon Klein, *Never Eat The Cone*

Hywel Livingstone is the recipient of the £1000 **Jeff Lowe Sculpture Prize** for his geometric stainless steel work *Walking Through*. His sculpture practice involves exploring and manipulating the relationship between objective building or construction (with all the practical material based challenges that go with it) and the subjective associations that are conjured by the final result. The artist said “*Walking Through* optimises this exploration by asking questions of the viewer – as well as hopefully providing some answers.”



Hywel Livingstone, *Walking Through*



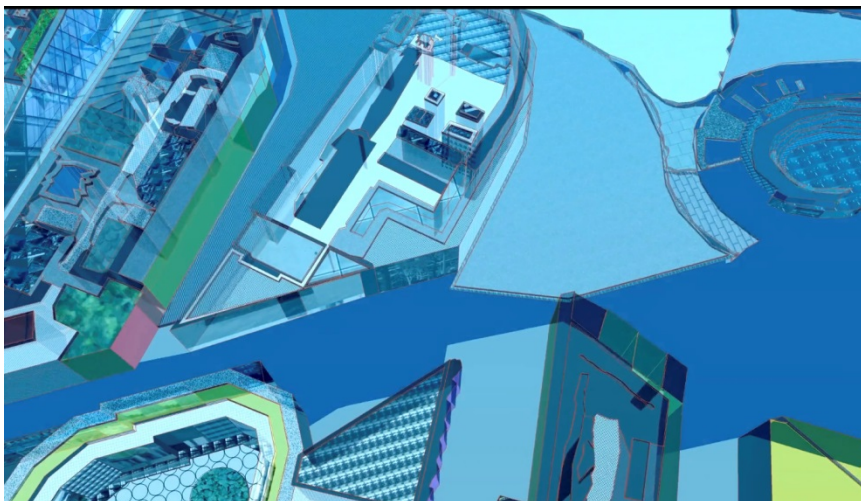
Anita Bryan, *German House*

The **£1000 JPES Partnership Prize** has been awarded to artist **Anita Bryan** for her black and white gelatin silver print *German House*. For Bryan, the piece “reflects the hidden landscape of atmosphere, its striking yet ambiguous nature defining its appeal.’ She said “I am truly thrilled for *German House* to have been nominated for inclusion within The London Group Open.”



Amelia Kate Sampson, *A. Fossil 33017*

The recipient of the **£750 Chelsea Arts Club Trust Stan Smith Award** for an artist under 35 is **Amelia Kate Sampson**. Her winning limestone sculpture *A. Fossil 33017* shows the artist’s interpretation of a futuristic fossil. Depicting a fossilised rope, Sampson aims to deprecate the evolution of man and its degenerative impact on the biosphere.



Sandra Crisp, *Remote City (skygardens_towers)*

Sandra Crisp is the winner of the **£500 Schauerman Prize for Digital Art** for her experimental video work *Remote City (skygardens_towers)* which pans through elevated levels of a fragmented and futuristic city featuring sky gardens, and empty high-rise towers that humans appear to have left behind. She says the “hybrid

architectural models are textured with borrowed/ downloaded visuals and smart-phone-camera stills, embedded into their multi-faceted surfaces.”



Katy Shepherd has been awarded the **£300 Worshipful Company of Painter-Stainers Prize for Drawing**. Her hand-drawn animation *Mother Drawn from Memory* is part of an ongoing project marking the 20th anniversary of her Mother's death in 1996. The emotive work, Shepherd says was “created out of repeated attempts to draw her on a single sheet of paper using only my memory banks for reference. I have not looked at a photograph of her for over a year. The images depict her at different ages and it was my hope that the sum of all the drawings would describe her essence.”

Katy Shepherd, *Mother Drawn from Memory*

An artist talk will take place within the exhibition space on Friday 1st December 2017. For further details please visit: www.thelondongroup.com.

Notes to Editors

The London Group was formed in 1913 by thirty-two artists from The Camden Town Group and English Vorticists, including Jacob Epstein, Wyndham Lewis, and Walter Sickert, with the aim of creating an independent artist-led exhibiting body to counterbalance the power of institutions such as the Royal Academy. Since its foundation, the organisation has been an integral force in contributing to diverse and emerging artistic talent across Britain. The Group's mentoring and exhibiting programme has gone on to support the careers of many of Britain's best-known artists. Paula Rego, Frank Bowling, Frank Auerbach, Barbara Hepworth, David Hockney, L.S. Lowry, Henry Moore, Graham Sutherland and Mary Fedden are among those who have benefitted from membership to The London Group throughout their careers. www.thelondongroup.com

The Cello Factory has been The London Group's exhibiting base for 7 years. It is a stunning double-height gallery in central London with copious natural light and a blacked-out video space. As well as having numerous London Group shows it has a very busy UK and international exhibiting programme and is shortly to host Young Contemporary Talent Ingram Collection Purchase Prize exhibition The Cello Factory is also a popular venue for concerts, particularly in showcasing young musicians, and it is home to the London Ear Festival of contemporary music. It is located paces from Waterloo Station.

For further details and images please contact Iona Rowland at Parker Harris on:

Tel. 01372 462190 Email: press@parkerharris.co.uk