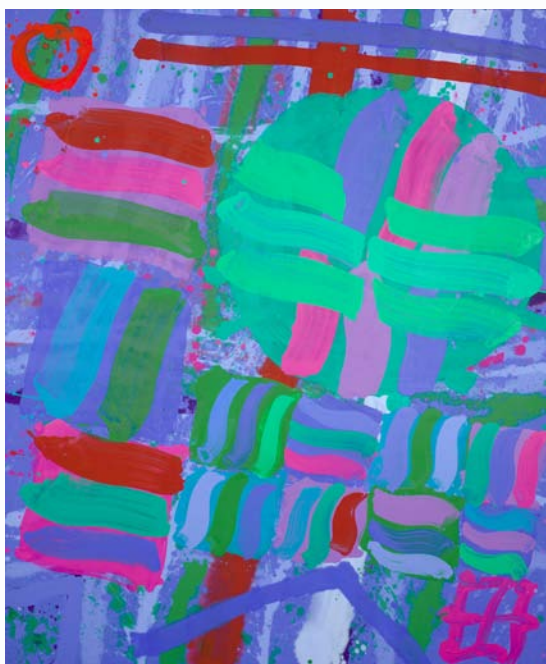


The London Group

CENTENARY EXHIBITION

Pitzhanger Manor Gallery & House
23 January – 9 March 2013



Albert Irvin, Presence



Dame Paula Rego, Prince Pig

100 works by over 80 current members of The London Group in PM Gallery and a series of site-specific installations throughout Sir John Soane's former home, Pitzhanger Manor House.

The London Group, the UK's longest running and most prestigious artists' co-operative, turns one hundred this year.

The London Group

The London Group was set up in 1913 by thirty-two artists including Harold Gilman, Henri Gaudier-Brzeska, Jacob Epstein, Duncan Grant, Wyndham Lewis, Lucien Pissarro and Walter Sickert, with the aim of creating a powerful artist-run exhibiting body to act as a counter balance to institutions such as the Royal Academy. The founding group created a structure for a democratically-run organisation with a mentoring and exhibiting programme that has gone on to support the careers of many of Britain's best-known artists. Craigie Aitchison, Frank Auerbach, Frank Bowling, Mary Fedden, Elisabeth Frink, Terry Frost, Barbara Hepworth, David Hockney, L.S. Lowry, Henry Moore and Graham Sutherland are among hundreds of British

press releases

artists who, from their post-graduate years through to the height of success, have benefitted from membership to The London Group.

To celebrate its centenary, the Group has an exciting year-long events programme starting on 23rd January 2013 with a Centenary Exhibition at the PM Gallery & Pitzhanger Manor House in West London.

100 works by current members in the PM Gallery

The PM Gallery is showing a wide selection of new work by current members in all media. Highlights include a lithograph by Dame Paul Rego, paintings by Vic Kuell, Frank Bowling, Dan Preece, Bill Henderson, Anthony Whishaw, Gus Cummins, Anthony Green, James Faure Walker and Albert Irvin, sculptures by Jeff Lowe, Mike Phillipson and Bill Watson and a mixed media piece by Mark Dickens.

Site-Specific Installations throughout Sir John Soane's Pitzhanger Manor House

The former home of architect Sir John Soane, Pitzhanger Manor is filled with site-specific pieces inspired by Soane's work, the Manor House, and the lives of its residents. In the domed Breakfast Room Susan Skingle hangs two installations: 'Aftermath' a mass of decapitated wine glasses with the stems and bases falling like hardened raindrops from the dome's painted clouds and 'To The Four Winds' which the artist describes as "Solidified breaths from an ancient conversation... Plaster exhalations at mouth-height around the tables like Cruikshank speech bubbles." Attached to Sir John Soane's four poster bed, Marcelle Hanselaar has made a 'pillow book' of etchings and text entitled 'Curious incidents in the night'. The Large Dining Room contains gelatin prints by Paul Tecklenberg, 'Cabinet of Curiosities I and II'. In the Stairwell and Library, two works by Susan Haire, 'Ruined Relics' and 'Fragments and Reflections' pay homage to the collections of objects that Sir John Soane began to amass at Pitzhanger. Inspired by the wall coverings in the reading room, Genetic Moo have created digital and sound pieces, 'The Blushing' and 'Skin Wall', described as "living wallpapers, one generative and the other interactive".

Amanda Loomes, video piece 'Buffering, buff and buffer' considers the value of time and the work of the cleaners in the maintenance of the house. Annie John's three small 'Hearth' installations placed in fireplaces stand as memorials to past inhabitants. Suzan Swale's sculptural piece 'Ghost' gives space to haunted figures in the House and is made from an antique dressmakers dummy dressed in red dyed and painted canvas as a calico dress with printed images of Hogarth's 'Rake's Progress'. All in all, The London Group Centenary Exhibition brings together many of Britain's most influential contemporary artists for a forward-looking show that both commemorates the role of the Group in shaping the world of visual arts over 100 years, and highlights the continued relevance of its work today.

Anthony Eyton, Wall



EXHIBITING ARTISTS:

Moich Abrahams, Mark Ainsworth, Victoria Arney, Victoria Bartlett, Bryan Benge, Slawomir Blatton, Frank Bowling RA, Clive Burton, Paul & Laura Carey, Tony Carter, Ece Clarke, Robert Clarke, Peter Clossick, Tony Collinge, John Crossley, Philip Crozier, Gus Cummins RA, Harvey Daniels, Mark Dickens, Angela Eames, Tony Eyton RA, James Faure Walker, Genetic Moo, Tricia Gillman, Anthony Green RA, Susan Haire, Marcelle Hanselaar, Julie Held, Bill Henderson, Aude Hérail Jäger, John Holden, Jane Humphrey, Gill Ingham, Bert Irvin RA, Sam Jarman, Annie Johns, Lydia Julien, Matthew Kolakowski, Vic Kuell,

Visitor Information:

Admission is free to all visitors.

PM Gallery & House, Walpole Park, Mattock Lane, Ealing, London W5 5EQ

Dates: 23 January – 9 March 2013

Opening Times: Tues-Fri 1-5pm; Sat 11am-5pm.

Closed on Sundays and Mondays

www.ealing.gov.uk/pmgalleryandhouse 020 8567 1227

Travel: Trains & tube to Ealing Broadway. Buses 207, 65 & 83

Free Gallery Tour: Saturday 2 February 2013 at 2pm. An informal tour of the exhibition, featuring a performance of 'John' by Lydia Julien.

Free performance: Saturday 2 March 2013 at 2pm. A performance of 'Agnes' by Lydia Julien.

Note to Editors:

PM Gallery & House are owned and run by Ealing Council, which is planning a major development project that will see rooms restored and improved gallery, visitor & education facilities. The Council is bidding for £3.8m funding in total to support the restoration of the historic manor house and has been successful at the first round of bidding. Ealing Council has been awarded £275,000 from the Heritage Lottery Fund (HLF) to support the plans for the restoration of the House and grounds. Using money raised through the National Lottery, the HLF sustains and transforms a wide range of heritage for present and future generations to take part in, learn from and enjoy.

Press Contacts:

More information on **The London Group** and its Centenary programme can be found at www.thelondongroup.com or by contacting Jessica or Hannah at Artsinform Communications on 01273 488996 jessica@artsinform.co.uk

For further information on the Centenary Exhibition at Pitzhanger Manor Gallery & House, please contact Michael Barrett or Kirsten Canning on 020 8295 2424 or mb@thepressoffice.uk.com

Lydia Maria Julien, *Untitled (Interior & Doors)*, Sam Jarman, *Found and made 3*



Pauline Little, Amanda Loomes, Jeff Lowe, Peter Lowe, Graham Mileson, Eric Moody, C. Morey de Morand, Peter Morrell, Charlotte C. Mortensson, Kathleen Mullaniff, Janet Nathan, Ken Oliver, Eugene Palmer, Ian Parker, Janet Patterson, Mike Phillipson, Christopher Poulton, Dan Preece, Alex Ramsay, Victoria Rance, Simon Read, David Redfern, Dame Paula Rego, Tom Scase, Tommy Seaward, David Shutt, Susan Skingle, Wendy Smith, Philippa Stjernsward, Suzan Swale, David Tebbs, Paul Tecklenberg, Philippa Tunstill, Bill Watson, Neil Weerdmeester, Anthony Wishaw, Arthur Wilson, Susan Wilson, Erika Winstone.