

# The London Group **ON LONDON**

Sixty artists, one city, one moment in time  
February 27 to March 12, The Cello Factory, London SE1  
**Press Preview 5pm-6pm, 27 February followed by Private View**



Suzan Swale

Taking the capital as its theme, sixty London Group artists show their visual interpretations of London, its architecture, infrastructure and communities, in a sensational series of paintings, sculpture, photography and video works. Like London itself, the works are eclectic, but together they present a portrait of one city in one moment of time.

Throughout its 100-year history, The London Group exhibitions have shown work by both well-known and emerging artists. The London Group on London is no exception. At this multi-faceted exhibition you will see works by eminent artists such as Albert Irvin, recently awarded an OBE in the Queen's Honours list, Frank Bowling RA, Anthony Whishaw RA and Anthony Eyton RA hanging side-by-side with works by talented recent graduates. Three

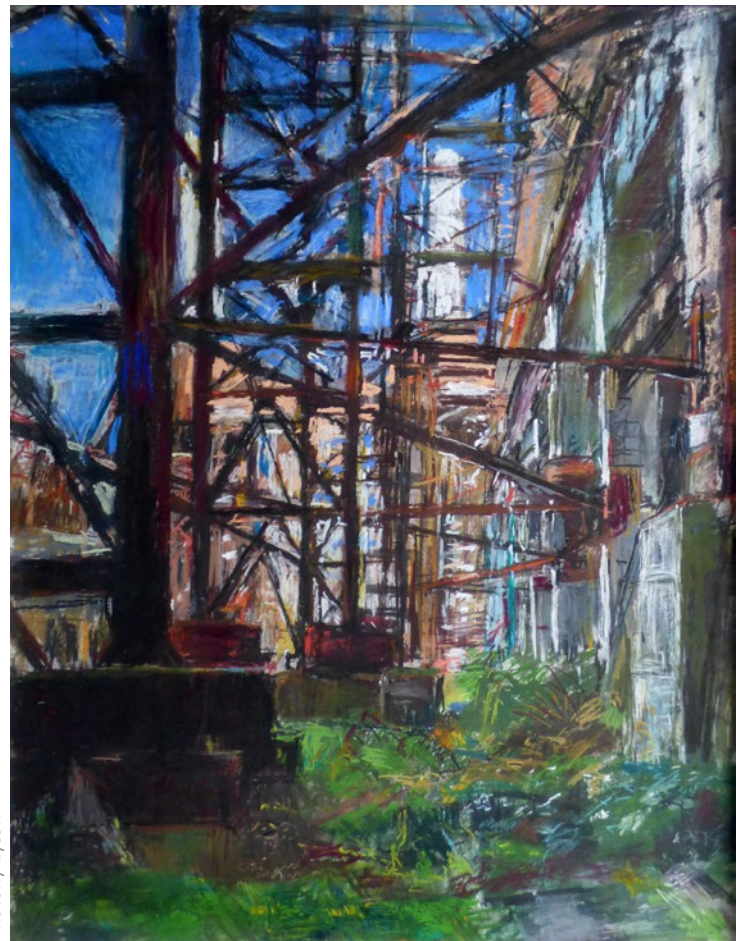
press release



generations of Londoners show their urban visions in this inclusive exhibition. Works to look out for are Whishaw's remarkable painting of St Paul's Cathedral, Amanda Loomes' video 'Paste' showing workers putting up and taking down advertisements on the underground, 'The Rainbow Tower', a painting by Mark Ainsworth showing The Jewel Tower, one of four buildings to survive the burning of the Houses of Parliament in 1834, and David Redfern's photograph investigating the symbolism behind the painting 'The Ambassadors' in The National Gallery.

## Skyscrapers to Sewers

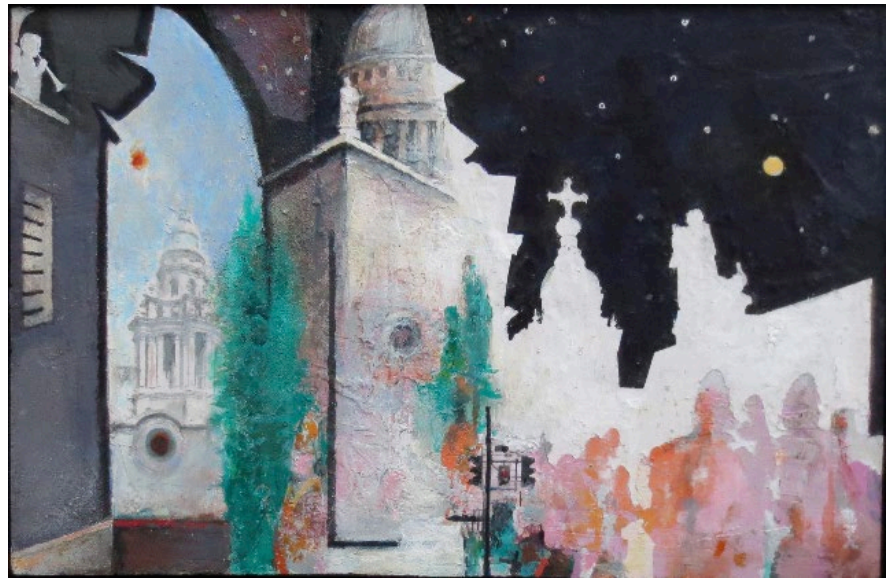
London Group artists have been all over the capital in the past year creating works for the show. From skyscrapers to sewers, the richness and diversity of London and its multitude of postcodes, is represented. While Vaughan Grylls has been photographing London's sub-terreanean world, Julie Held has been looking to the city's night sky for the subject of her paintings of Bonfire Night. Slawomir Blatton, Tom Scase and Erika Winstone show highly contrasting works about life on Hampstead Heath. Mark Dickens looks at Battersea Power Station (its original engineering blueprints are incorporated in his mixed media works) and the digital art group Genetic Moo show a video based on their life in a Peckham high rise.





## Faces and places

Eric Fong portrays, Adam, a solitary London resident. The city's hospital architecture is the source of inspiration for Tommy Seaward. Vic Kuell's work is about the dust of London or as he describes "the fundamental building block of the universe, the cities we erect and the earth to



Anthony Whishaw

which we return". Arthur Wilson, Gillian Ingham, Susan Skingle and Janet Natham create works inspired by The River Thames, the source of the city. The capital's famous black cabs are represented in paintings by Eugene Palmer and Moich Abrahams is inspired by a cat that helped his master become mayor. Suzan Swale's painting 'Rush' takes the viewer on a journey on one of London Underground's escalators.

## 100th anniversary of The London Group's first exhibition

The exhibition coincides with the anniversary of the first London Group exhibition, held on 5 March 1914 at The Goupil Gallery in Regent Street. Current London Group members and guests will attend a reception at Tate Britain on the 5 March to mark this important anniversary. Selected members of the press are welcome to join The Group here. Please contact Jessica at Artsinform if you would like to attend.

The London Group on London, February 27 to March 12, The Cello Factory, 33-34 Cornwall Road, London SE1 8TJ [www.thelondongroup.com](http://www.thelondongroup.com), [enquiries@thelondongroup.com](mailto:enquiries@thelondongroup.com)

Tube Waterloo

Open: Daily 2pm -6pm.

Admission: Free Private View 27 February 6pm-9pm.

PRESS PREVIEW WITH TOURS 5PM-6PM

## Press Contact

Jessica Wood, Artsinform  
01273 488996 or 07939 226988  
[jessica@artsinform.co.uk](mailto:jessica@artsinform.co.uk)



Vaughan Grylls